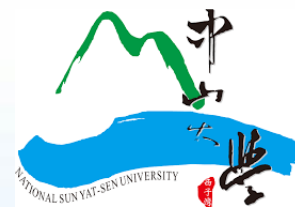




Expanding research on the coastal plant *Aglaia Rimosa*'s secondary metabolites separation



阮氏鶯兒 (Nguyen Thi Uyen Nhi)¹, 洪念喬 (Nien-Chiao Hong)², 洪榆婷 (Yu-Ting Hong)², 韓鎮鴻 (Zhen-Hong Han)², 林威宇 (Wei-Yu Lin)³, 林昀生 (Lin Yun-heng)¹, 翁靖如 (Jing-Ru Weng)²

¹ Department of Biotechnology, Meiho University, No. 23號, Pingguang Rd, Neipu Township, Pingtung County, 912

² Department of Marine Biotechnology Resources, National Sun - sen University, Kaohsiung 80424, Taiwan

³ Department of Pharmacy, Kinmen Hospital, Kinmen, 89142, Taiwan

Introduction

- *Aglaia rimosa* is a shrub or a tree with a dense crown; it can grow from 2-30 metres tall.
- The tree is harvested from the wild for local use as the source of wood.
- Several of them exhibit pronounced cytotoxic activity against a range of human cancer cells.

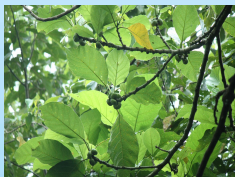
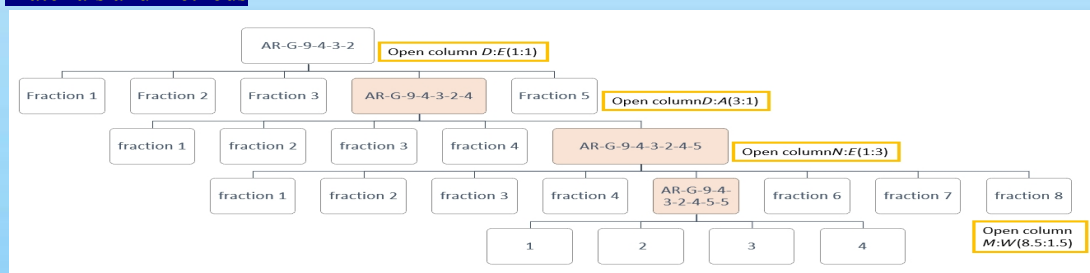


Fig.1 The photo of *Aglaia Rimosa*

Materials and methods



Results and discussions

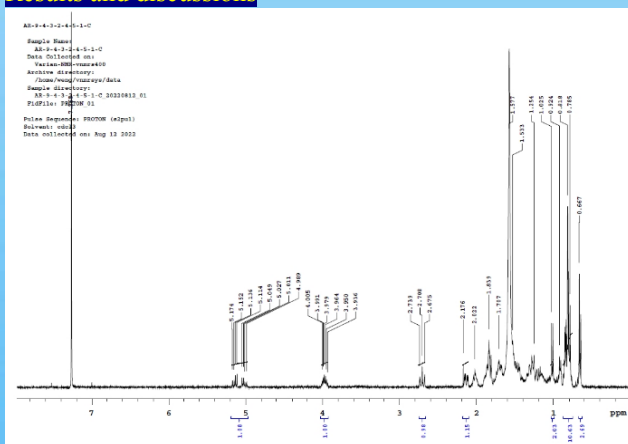


Fig.2 This is the pure compound which needed the structure elucidation.

Acknowledgements

The work was supported by a grant from the Ministry of Science and Technology (MOST 110-2320-B-110-003-MY3).