

Abstract

Clerodendrum japonicum (Thunb.) Sweet is a traditional medicinal plant mainly distributed in tropical and subtropical Asia. The chemical constituents from the ethanol extract of *C. japonicum* were isolated by chromatography silica gel, Sephadex LH-20, and reverse-phase HPLC. The structures of all isolated compounds were identified by NMR spectroscopy.

Method



Figure 3. Sephadex LH-20



Figure 4. reverse-phase HPLC

Material



Figure 1. *Clerodendrum japonicum* (Thunb.) Sweet
<https://reurl.cc/ERjNYv>

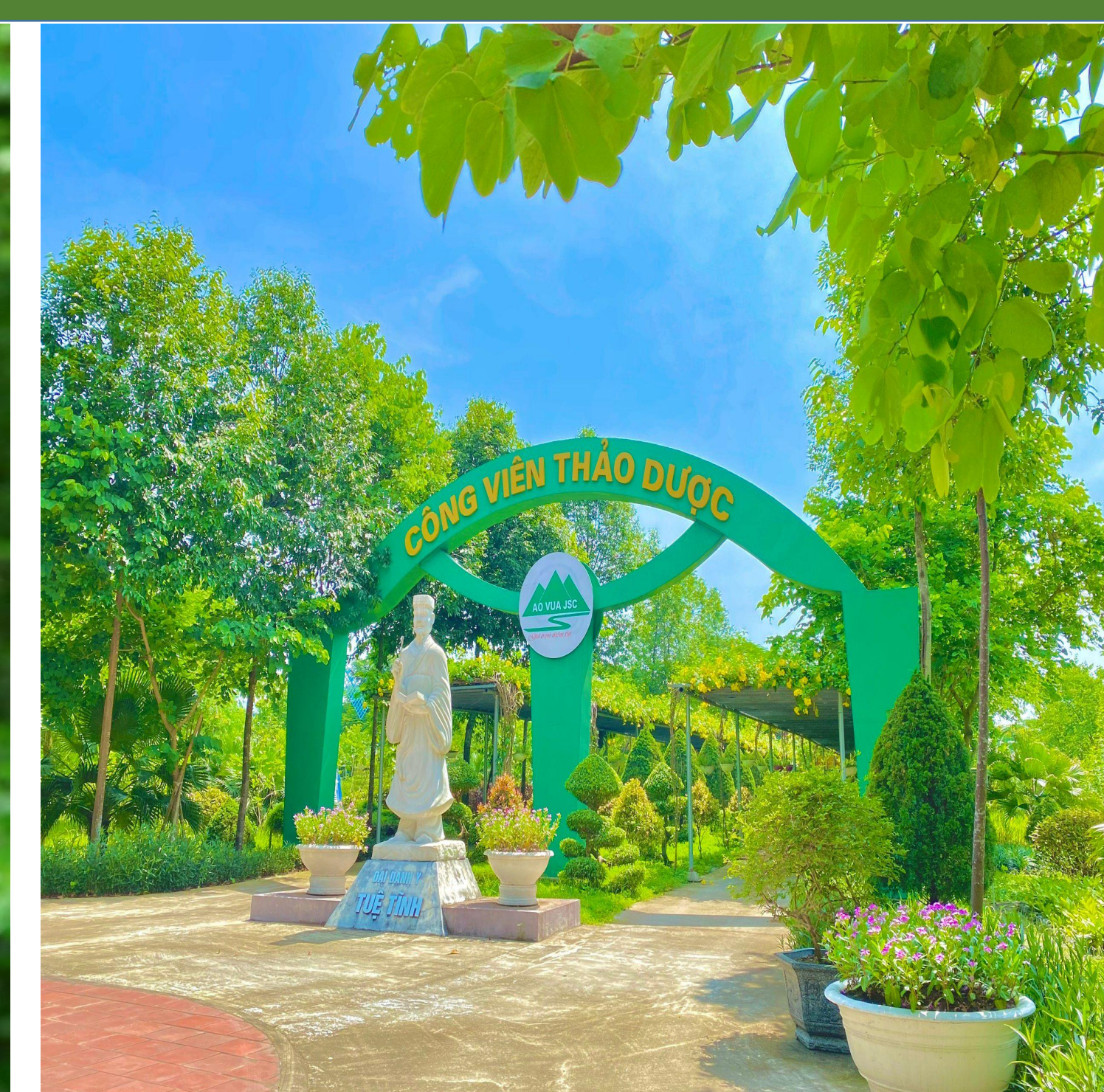


Figure 2. Herbal park in Phu Tho, VietNam
<https://reurl.cc/D3jMMj>

Clerodendrum japonicum (Thunb.) Sweet had been take from herbal park in Phu Tho, VietNam.

Results

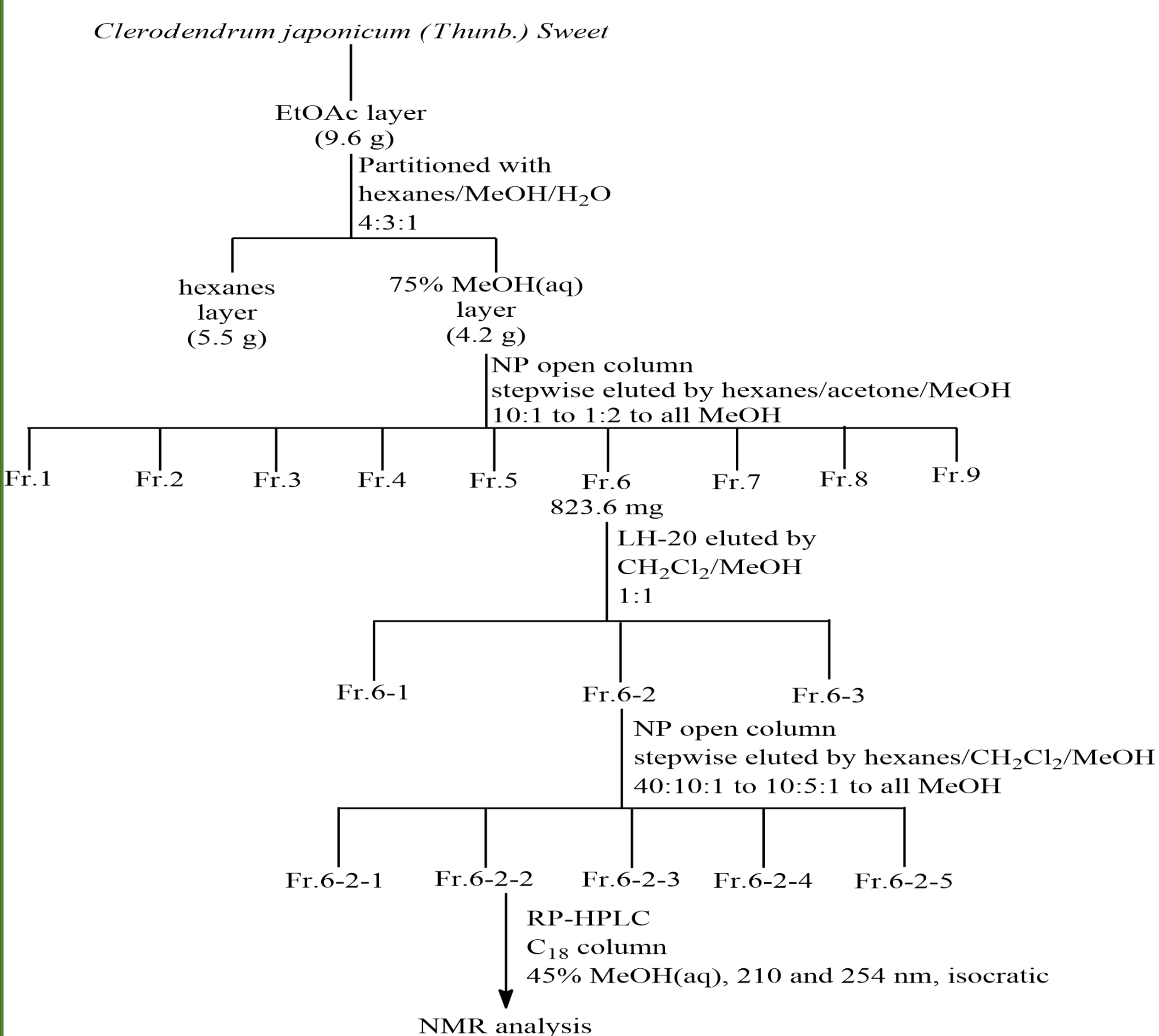


Figure 5. The flow chart of extraction and isolation

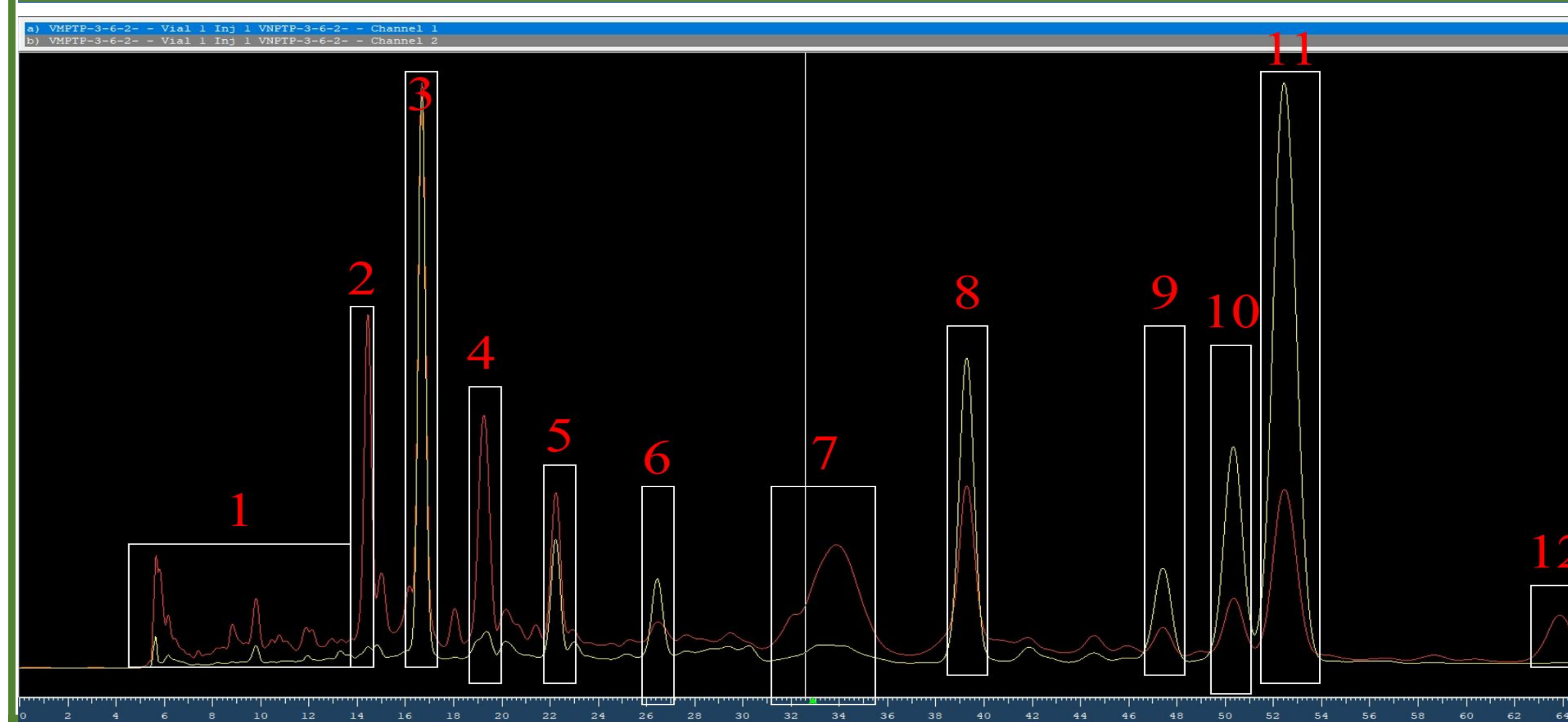


Figure 6. HPLC profile of Fr.6-2-2

Conclusions

Clerodendrum japonicum (thunb.) Sweet is very potential for analysis and isolation by chromatography.